



THIS *REGISTERED OUTLINE* HAS BEEN PREPARED BY THE JEDEC JC-11 COMMITTEE AND REFLECTS A PRODUCT WITH ANTICIPATED USAGE IN THE ELECTRONICS INDUSTRY; CHANGES ARE LIKELY TO OCCUR.

TITLE	PLASTIC DUAL SMALL OUTLINE GULL WING PACKAGE, 1.10MM THICK	PACKAGE DESIGNATOR	NUMBER	ISSUE	DATE	SHEET
		PDSO-G#_I0P5-##...	MO-345	A	OCT 2020	1 OF 5

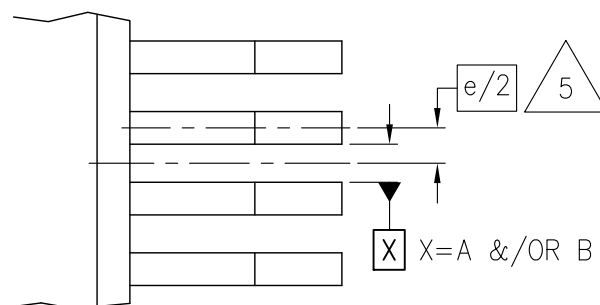
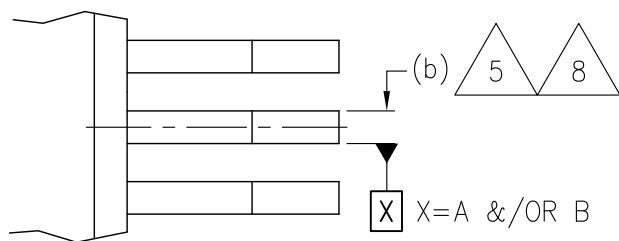
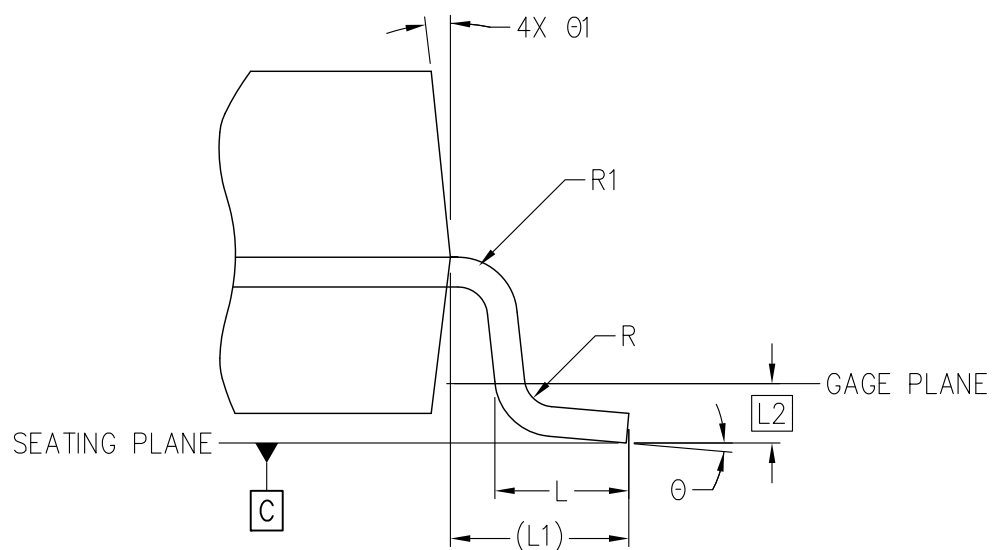
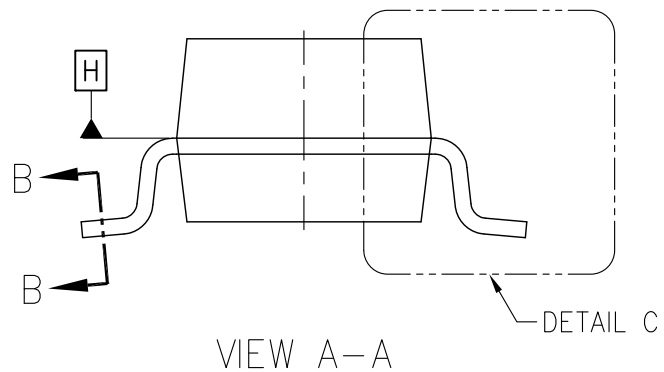
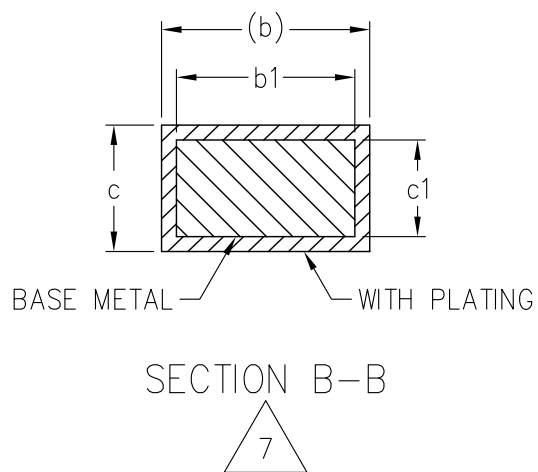


TABLE 1

COMMON DIMENSIONS				
SYMBOL	MIN	NOM	MAX	NOTES
A	---	---	1.10	
A1	0	---	0.10	
A2	0.70	0.90	1.00	
c	0.08	---	0.20	7
c1	0.08	0.13	0.16	7
D	4.20 BASIC			3, 4
E	3.26 BASIC			3, 4
E1	2.00 BASIC			3, 4
L	0.33	0.45	0.63	
L1	0.630 REF			
L2	0.25 BASIC			
R	0.10	---	---	
R1	0.10	---	0.25	
θ	0°	4°	8°	
θ1	0°	10°	15°	
NOTES	1, 2, 8			
REF	11-984			
ISSUE	A			

TABLE 2

TOLERANCE OF FORM AND POSITION	
SYMBOL	VALUE
aaa	0.20
bbb	0.20
ccc	0.10
NOTES	1, 2
REF	11-984
ISSUE	A

TABLE 3

VARIATIONS							
SYMBOL	AA			AB			NOTES
	MIN	NOM	MAX	MIN	NOM	MAX	
b	0.11	—	0.31	0.11	—	0.31	7, 8
b1	0.11	0.21	0.26	0.11	0.21	0.26	7, 8
e	0.50 BASIC			0.50 BASIC			
e1	3.50 BASIC			3.00 BASIC			
N	16			14			
ddd	0.20			0.20			
NOTES	1, 2			1, 2, 6			
REF	11-984			11-984			
ISSUE	A			A			

NOTES:

1. DIMENSIONING AND TOLERANCING PER ASME Y14.5–2009.

2. DIMENSIONS IN MILLIMETERS.



DIMENSION D DOES NOT INCLUDE MOLD FLASH, PROTRUSIONS OR GATE BURRS. MOLD FLASH, PROTRUSIONS OR GATE BURRS SHALL NOT EXCEED 0.25 mm PER END. DIMENSION E1 DOES NOT INCLUDE INTERLEAD FLASH OR PROTRUSION. INTERLEAD FLASH OR PROTRUSION SHALL NOT EXCEED 0.25 mm PER SIDE. D AND E1 DIMENSIONS ARE DETERMINED AT DATUM H.



THE PACKAGE TOP MAY BE SMALLER THAN THE PACKAGE BOTTOM. DIMENSIONS D AND E1 ARE DETERMINED AT THE OUTERMOST EXTREMES OF THE PLASTIC BODY EXCLUSIVE OF MOLD FLASH, TIE BAR BURRS, GATE BURRS AND INTERLEAD FLASH, BUT INCLUDING ANY MISMATCH BETWEEN THE TOP AND BOTTOM OF THE PLASTIC BODY. D AND E1 DIMENSIONS ARE DETERMINED AT DATUM H.



DATUMS A & B TO BE DETERMINED AT DATUM H.



THESE DIMENSIONS APPLY TO THE FLAT SECTION OF THE LEAD BETWEEN 0.08 mm AND 0.15 mm FROM THE LEAD TIP.



DIMENSION 'b' DOES NOT INCLUDE DAMBAR PROTRUSION. ALLOWABLE DAMBAR PROTRUSION SHALL BE 0.08 mm TOTAL IN EXCESS OF THE "b" DIMENSION AT MAXIMUM MATERIAL CONDITION. THE DAMBAR CANNOT BE LOCATED ON THE LOWER RADIUS OF THE FOOT. MINIMUM SPACE BETWEEN PROTRUSION AND AN ADJACENT LEAD SHALL NOT BE LESS THAN 0.07 mm.



DETAILS OF THE PIN 1 IDENTIFIER ARE OPTIONAL, BUT MUST BE LOCATED WITHIN THE ZONE INDICATED.

STP (3D) FILE RECORD

3D FILE NAMES MAY EXCEED LENGTH REQUIREMENTS FOR SOME SOFTWARE TOOLS.

STP FILE NAME	ISSUE	DATE	ITEM NUMBER
PDS0-G14-I0p5-R4p2x2p0Z1p1-N3p26T0p2	A	OCT 2020	11-984
PDS0-G16-I0p5-R4p2x2p0Z1p1-N3p26T0p2	A	OCT 2020	11-984

TASK GROUP CONTRIBUTORS

TEXAS INSTRUMENTS

CHANGE RECORD

IF THE CHANGE INVOLVES ANY WORDS ADDED OR DELETED (EXCLUDING DELETION OF ACCIDENTALLY REPEATED WORDS), THE CHANGE IS TO BE INCLUDED BELOW. PUNCTUATION CHANGES MAY OR MAY NOT BE INCLUDED.

INITIAL ISSUE: A	DATE: OCTOBER 2020	ITEM NUMBER: 11-984
------------------	--------------------	---------------------

ISSUE: -	DATE: -	ITEM NUMBER: -
----------	---------	----------------

LOCATION:	CHANGED FROM:	CHANGED TO: